

Brown's Ravine Trail-Change -in-Use

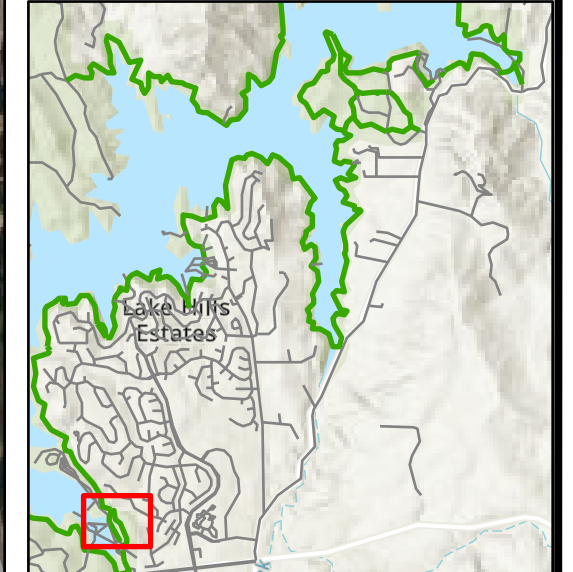
Folsom Lake SRA

Legend

- Trail Reroute
- Local Road
- State Park Road
- State Park Trail
- Bridge
- Facility
- Puncheon/Boardwalk
- Structure: Rock
- Drain Dip
- Trail Reconstruction
- Parking Areas

High= High priority to be completed prior to CIU.

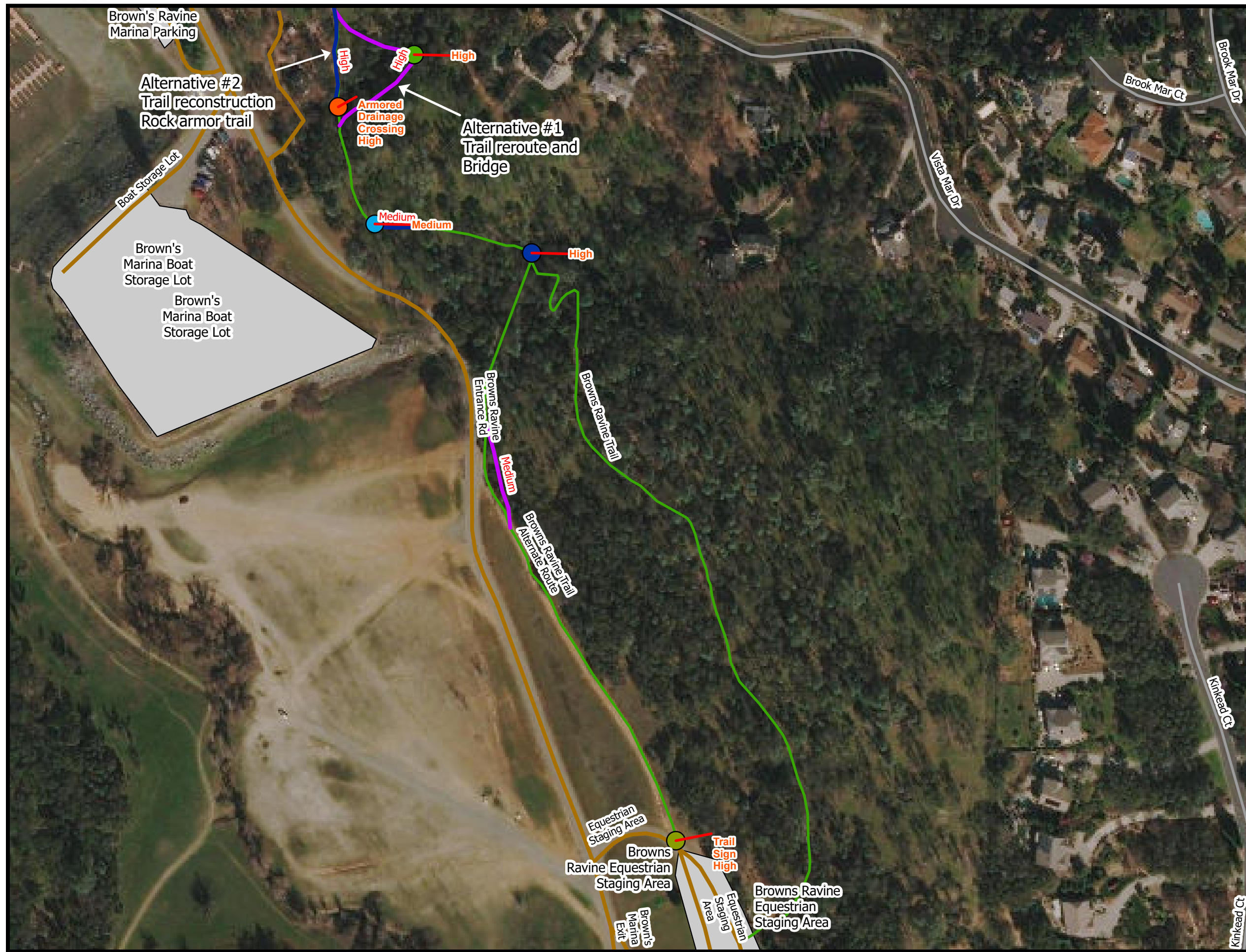
Medium= Medium priority to be completed within a designated timeframe after CIU.



0 100 200 400 Feet

California State Parks

6/7/2021



Brown's Ravine Trail-Change -in-Use

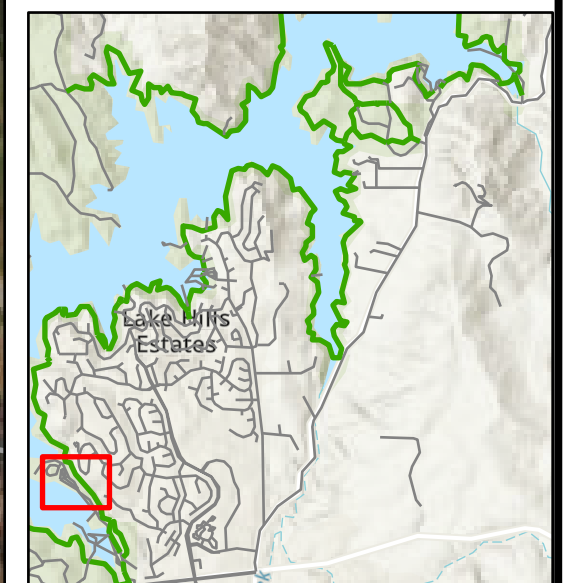
Folsom Lake SRA

Legend

- Trail Remove
- Trail Reroute
- Local Road
- State Park Road
- State Park Trail
- Bridge
- Structure: Rock
- Drain Dip
- Trail Reconstruction
- Parking Areas

High= High priority to be completed prior to CIU.

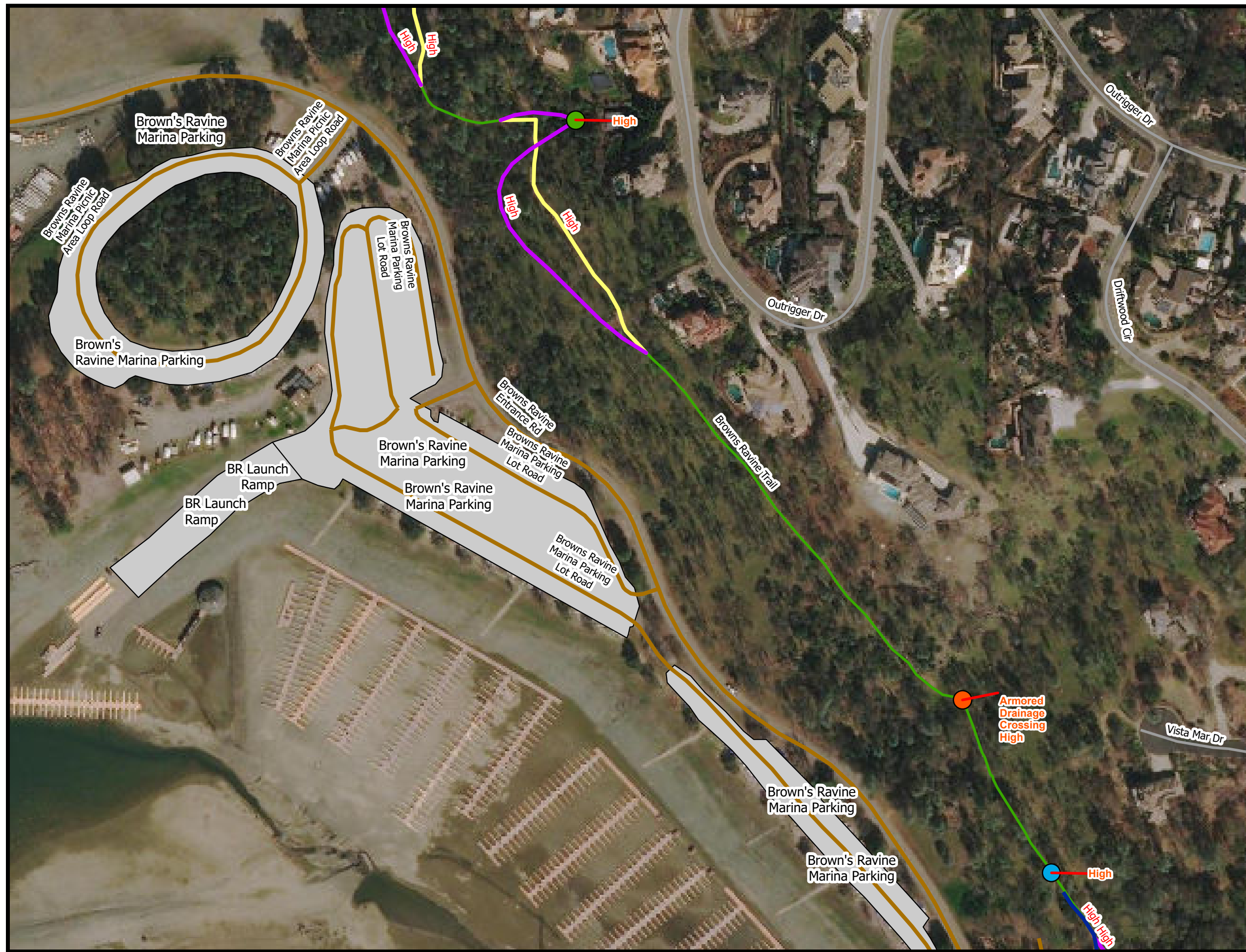
Medium= Medium priority to be completed within a designated timeframe after CIU.



0 100 200 400 Feet

California State Parks

6/7/2021



Brown's Ravine Trail-Change -in-Use

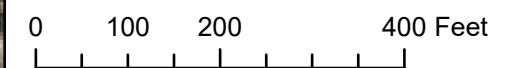
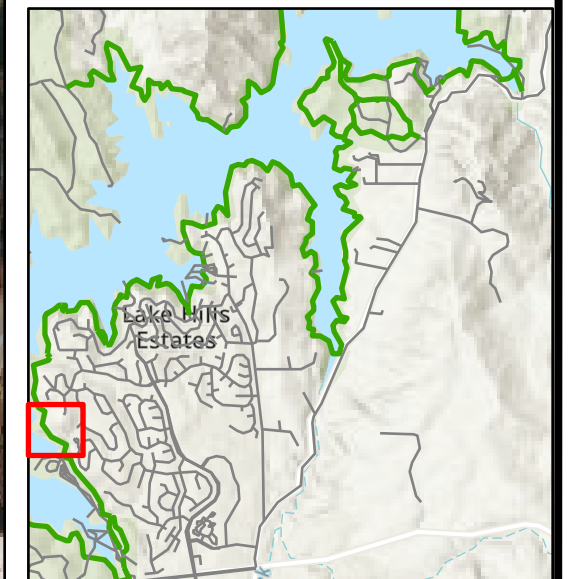
Folsom Lake SRA

Legend

- Trail Remove
- Trail Reroute
- Local Road
- State Park Trail
- Structure: Rock
- Trail Reconstruction
- Drain Dip
- Trail Reconstruction
- Parking Areas

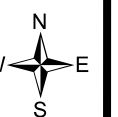
High= High priority to be completed prior to CIU.

Medium= Medium priority to be completed within a designated timeframe after CIU.



California State Parks

6/7/2021



Brown's Ravine Trail- Change -in-Use

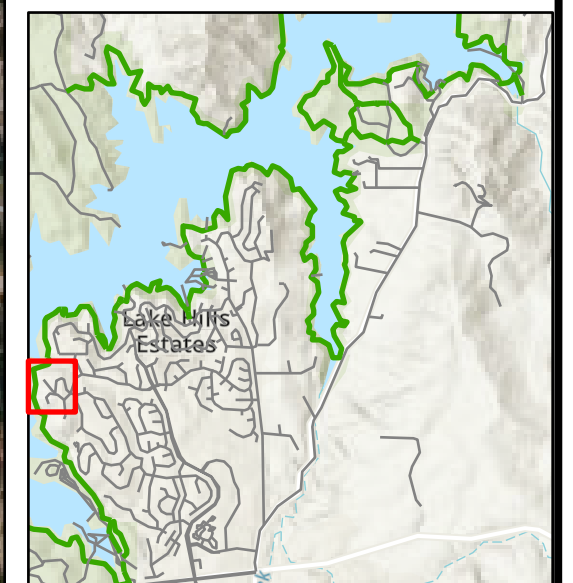
Folsom Lake SRA

Legend

- Trail Remove
- Local Road
- State Park Trail
- Structure: Rock
- Trail Reconstruction
- Drain Dip
- Parking Areas

High= High priority to be completed prior to CIU.

Medium= Medium priority to be completed within a designated timeframe after CIU.



0 100 200 400 Feet

California State Parks

6/7/2021



Brown's Ravine Trail-Change -in-Use

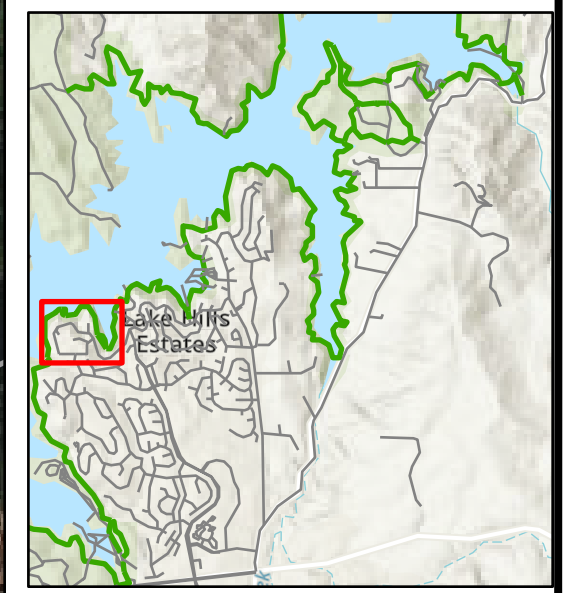
Folsom Lake SRA

Legend

- Trail Remove
- Trail Reroute
- Local Road
- State Park Trail
- Structure: Rock
- Trail Reconstruction
- Drain Dip
- Trail Reconstruction
- Parking Areas

High= High priority to be completed prior to CIU.

Medium= Medium priority to be completed within a designated timeframe after CIU.



0 120 240 480 Feet

California State Parks

6/7/2021



Brown's Ravine Trail-Change -in-Use

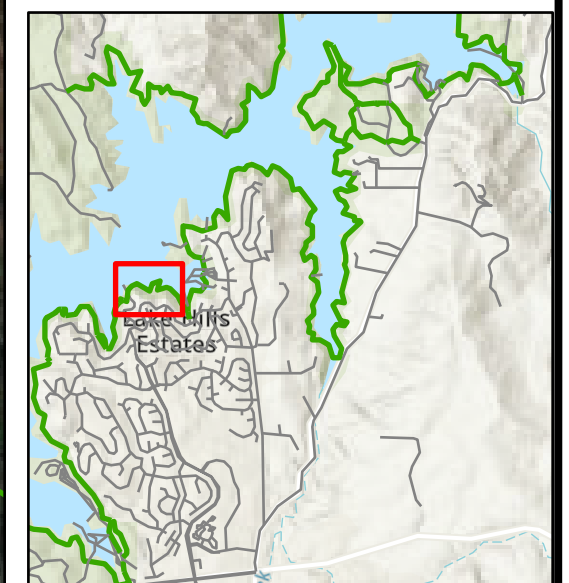
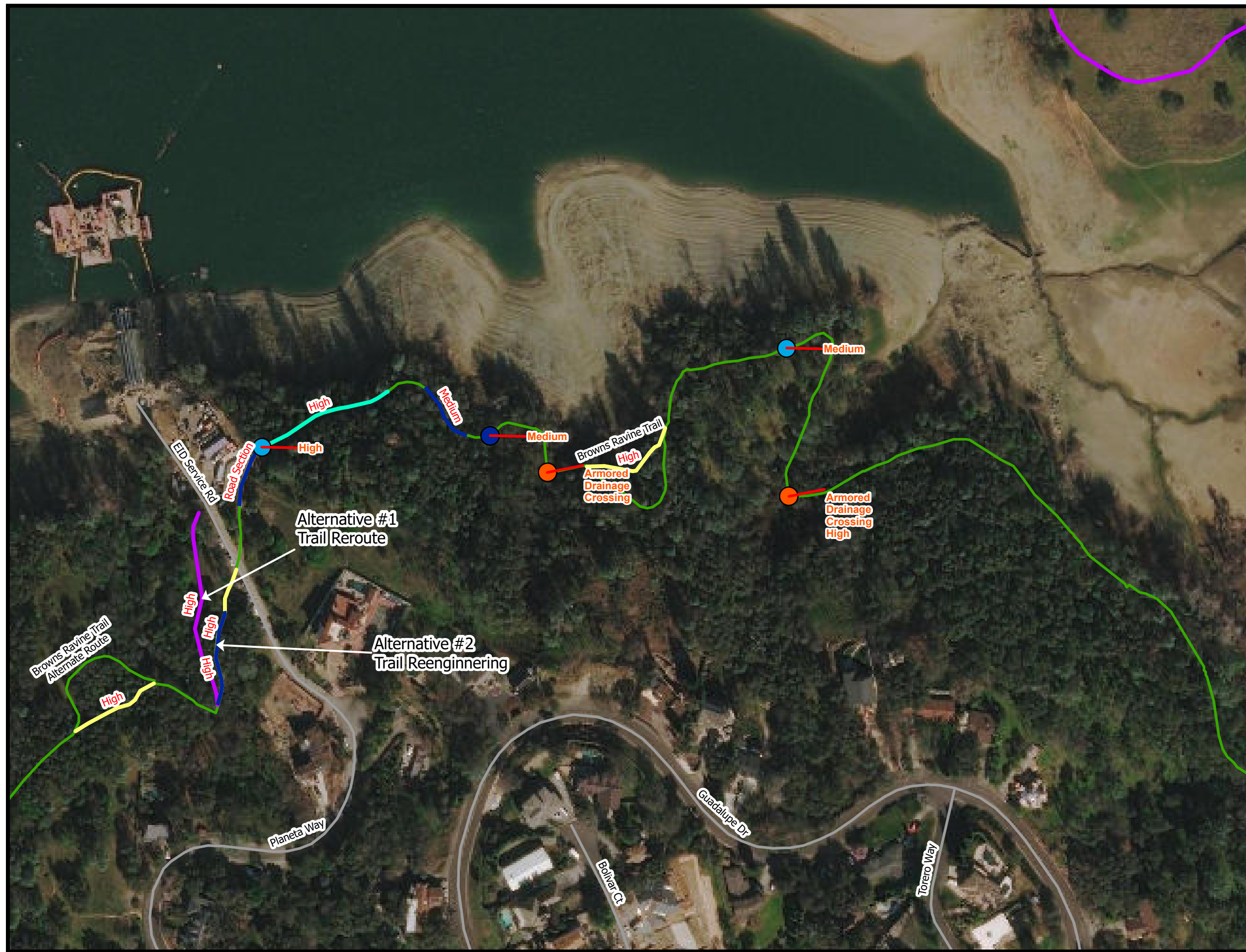
Folsom Lake SRA

Legend

- Trail Remove
- Trail Reroute
- Trail Reconstruct/Reengineer
- Local Road
- State Park Trail
- Structure: Rock
- Trail Reconstruction
- Drain Dip
- Trail Reconstruction
- Parking Areas

High= High priority to be completed prior to CIU.

Medium= Medium priority to be completed within a designated timeframe after CIU.



California State Parks
6/7/2021

Brown's Ravine Trail-Change -in-Use

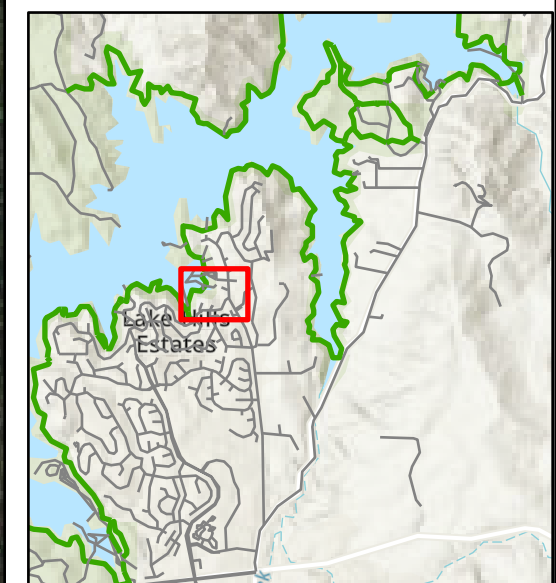
Folsom Lake SRA

Legend

- Trail Remove
- Trail Reroute
- <all other values>
- Local Road
- State Park Trail
- - - Other Agency Trail
- Structure: Rock
- Drain Dip
- Puncheon/Boardwalk
- Turnpike/Causeway Surfacing
- Parking Areas

High= High priority to be completed prior to CIU.

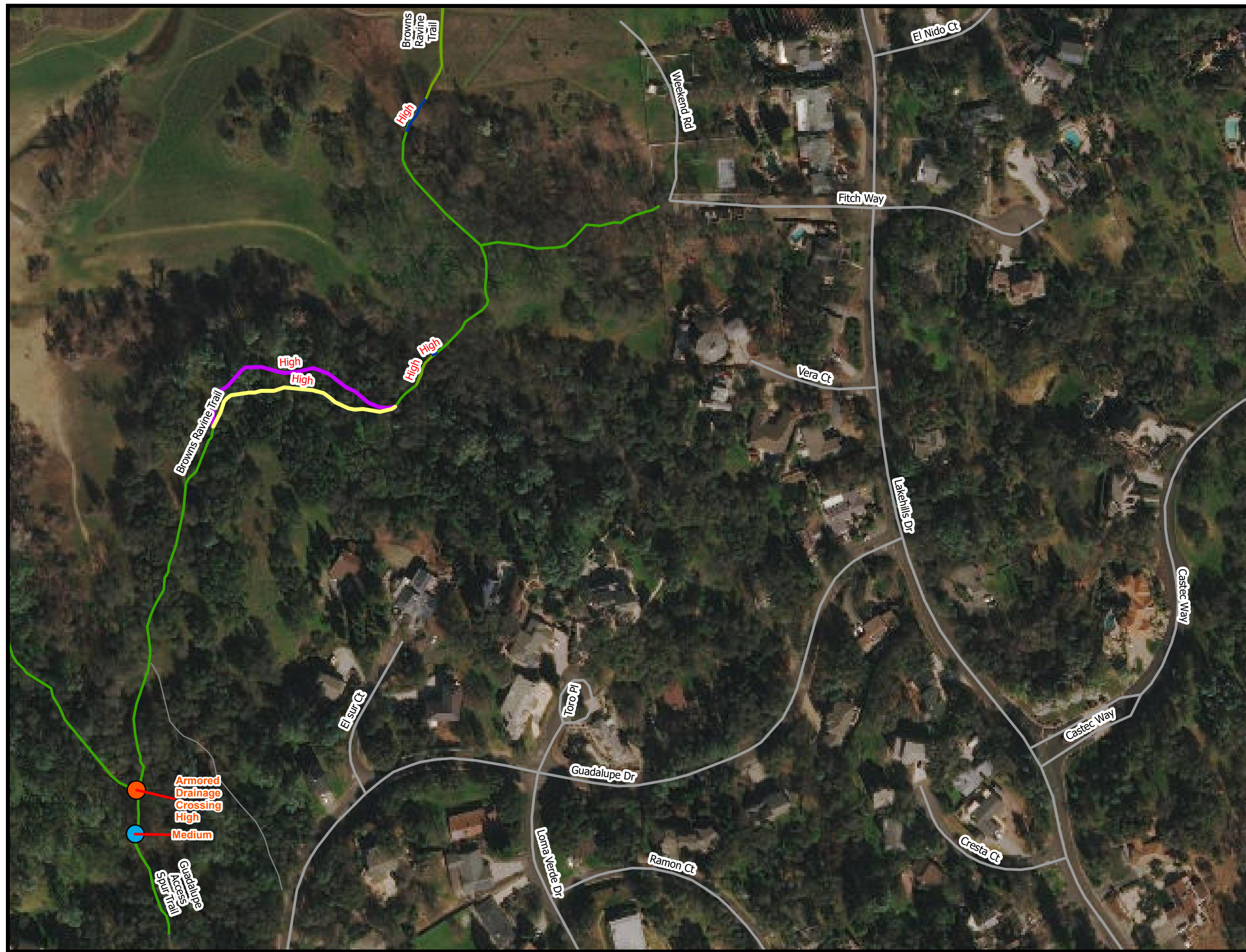
Medium= Medium priority to be completed within a designated timeframe after CIU.



0 100 200 400 Feet

California State Parks

6/7/2021



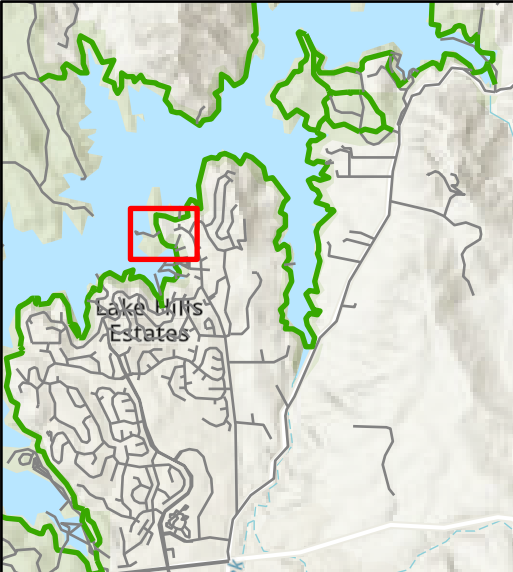
Brown's Ravine Trail-Change -in-Use

Folsom Lake SRA

Legend

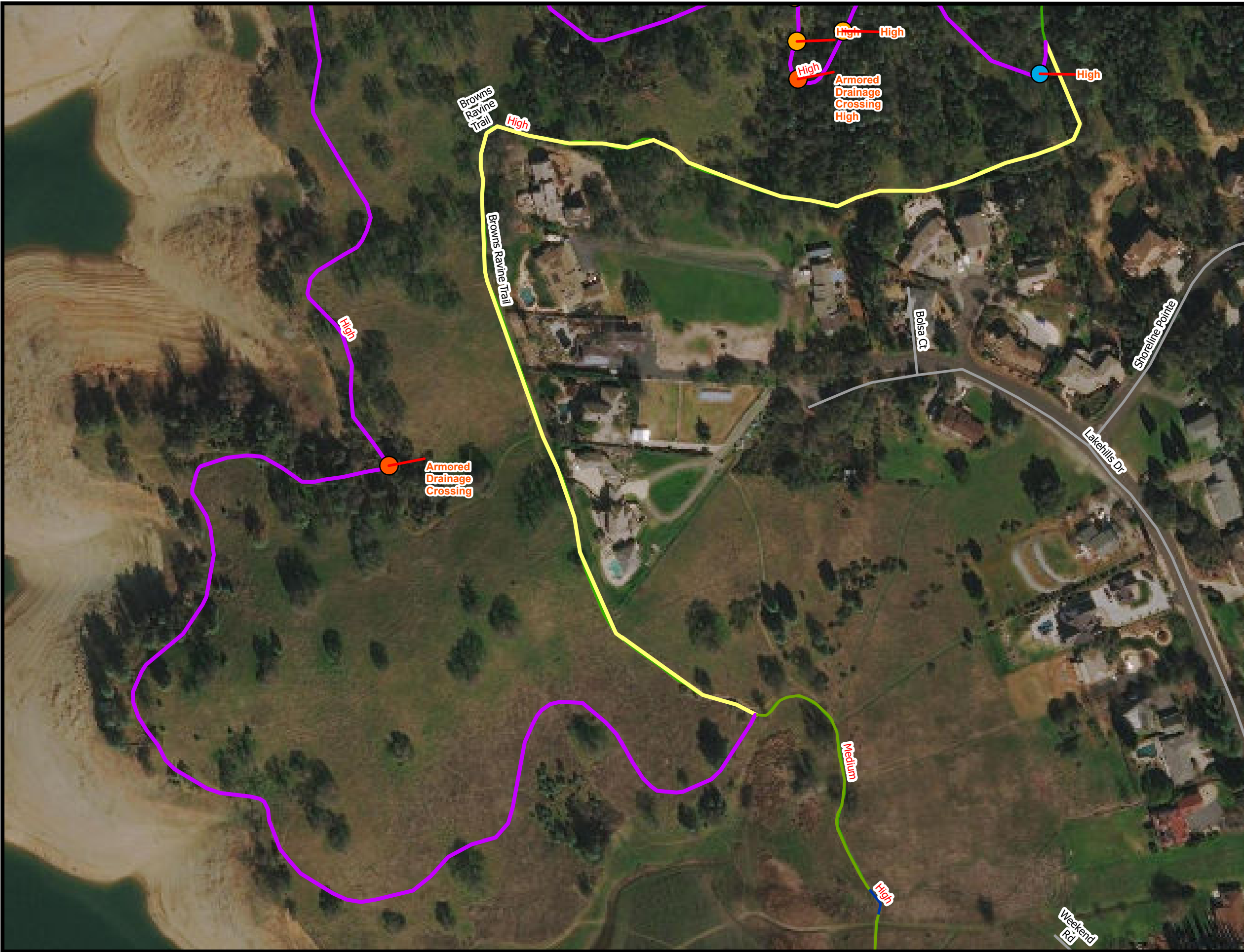
- Trail Remove
- Trail Reroute
- Local Road
- State Park Trail
- Standing Tree Removal
- Structure: Rock
- Drain Dip
- Puncheon/Boardwalk
- Turnpike/Causeway Surfacing
- Parking Areas

High= High priority to be completed prior to CIU.
 Medium= Medium priority to be completed within a designated timeframe after CIU.



0 100 200 400 Feet

California State Parks
 6/7/2021



Brown's Ravine Trail- Change -in-Use

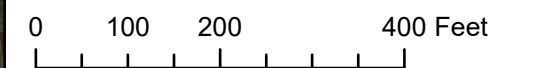
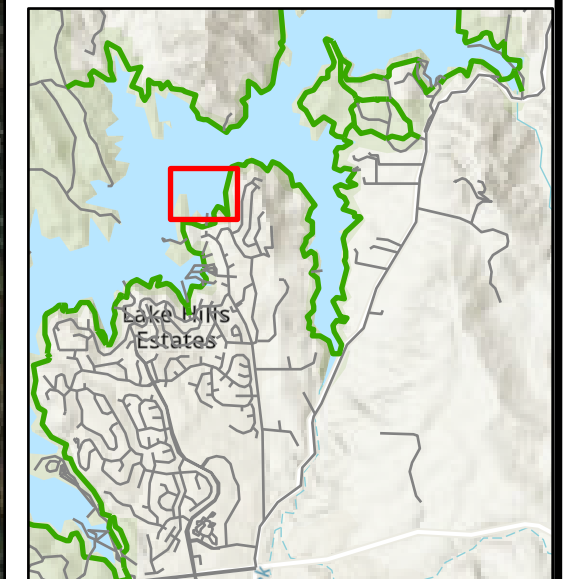
Folsom Lake SRA

Legend

- Trail Remove
- Trail Reroute
- State Park Trail
- Standing Tree Removal
- Structure: Rock
- Trail Reconstruction
- Drain Dip
- Parking Areas

High= High priority to be completed prior to CIU.

Medium= Medium priority to be completed within a designated timeframe after CIU.



California State Parks









6/7/2021



Brown's Ravine Trail- Change -in-Use

Folsom Lake SRA

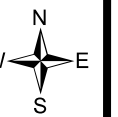
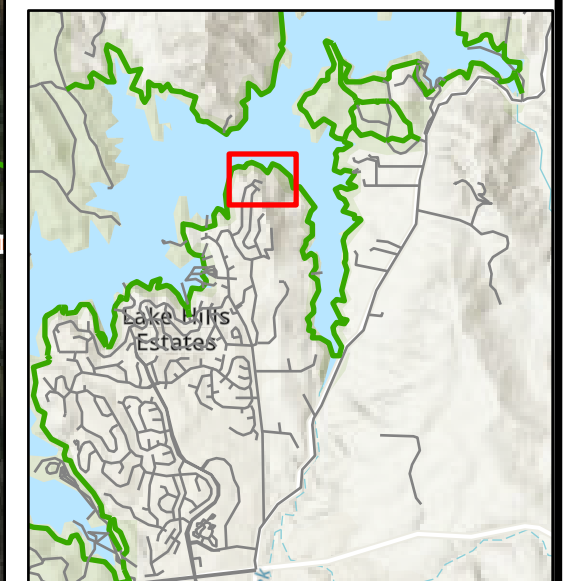
Legend

-  Local Road
-  State Park Trail
-  Structure: Rock
-  Trail Reconstruction
-  Other (See Comments)
-  Drain Dip
-  Trail Reconstruction
-  Parking Areas



High= High priority to be completed prior to CIU.

Medium= Medium priority to be completed within a designated timeframe after CIU.



Brown's Ravine Trail- Change -in-Use

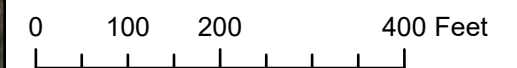
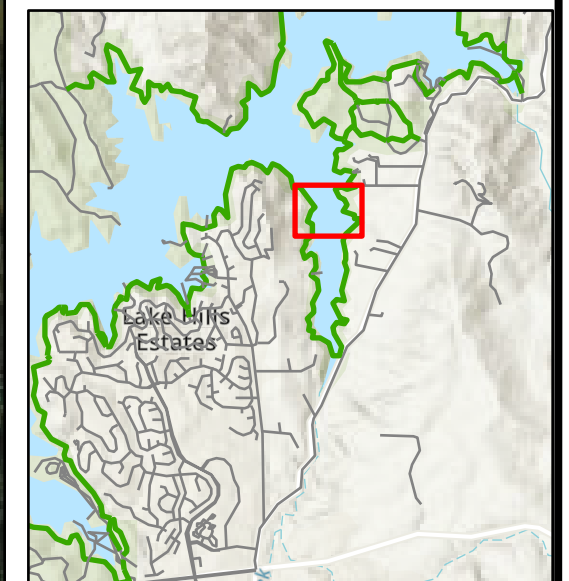
Folsom Lake SRA

Legend

- Trail Remove
- Trail Reroute
- State Park Trail
- Site Deconstruction/Restoration
- Structure: Rock
- Trail Brushing: Maintenance
- Trail Reconstruction
- Other (See Comments)
- Drain Dip
- Trail Brushing: Maintenance
- Trail Reconstruction
- Other (See Comments)
- Parking Areas

High= High priority to be completed prior to CIU.

Medium= Medium priority to be completed within a designated timeframe after CIU.



California State Parks

6/7/2021



Brown's Ravine Trail-Change -in-Use

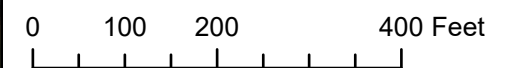
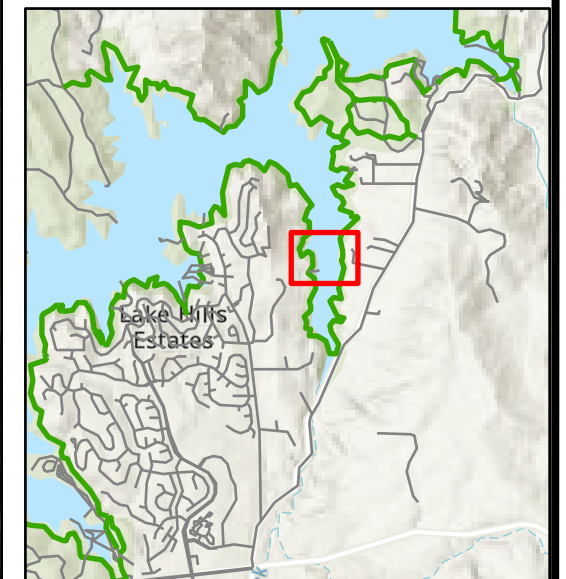
Folsom Lake SRA

Legend

- Trail Remove
- Trail Reroute
- Local Road
- State Park Trail
- Bridge
- Structure: Rock
- Trail Reconstruction
- Drain Dip
- Parking Areas

High= High priority to be completed prior to CIU.

Medium= Medium priority to be completed within a designated timeframe after CIU.



California State Parks

6/7/2021



Brown's Ravine Trail- Change -in-Use

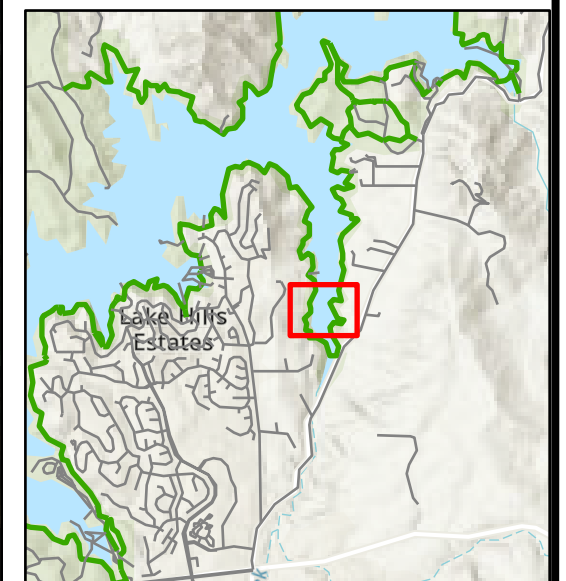
Folsom Lake SRA

Legend

- Local Road
- State Park Trail
- Structure: Rock
- Trail Brushing: Maintenance
- Other (See Comments)
- Drain Dip
- Parking Areas

High= High priority to be completed prior to CIU.

Medium= Medium priority to be completed within a designated timeframe after CIU.



0 100 200 400 Feet

California State Parks

6/7/2021



Brown's Ravine Trail- Change -in-Use

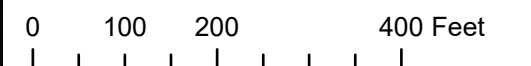
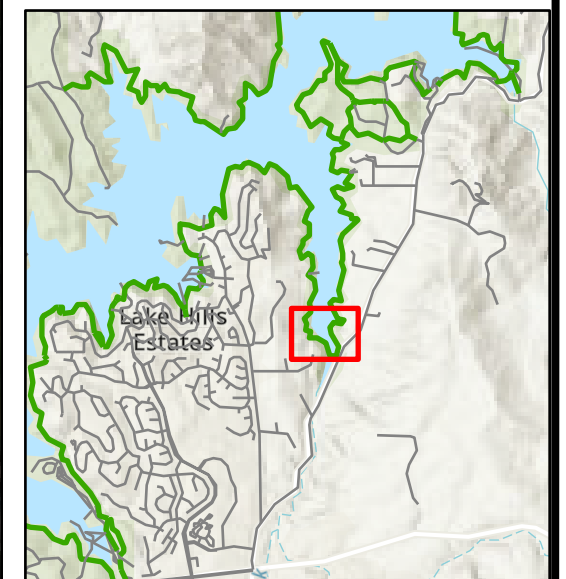
Folsom Lake SRA

Legend

- <all other values>
- Local Road
- State Park Trail
- Structure: Rock
- Trail Brushing: Maintenance
- Other (See Comments)
- Drain Dip
- Parking Areas

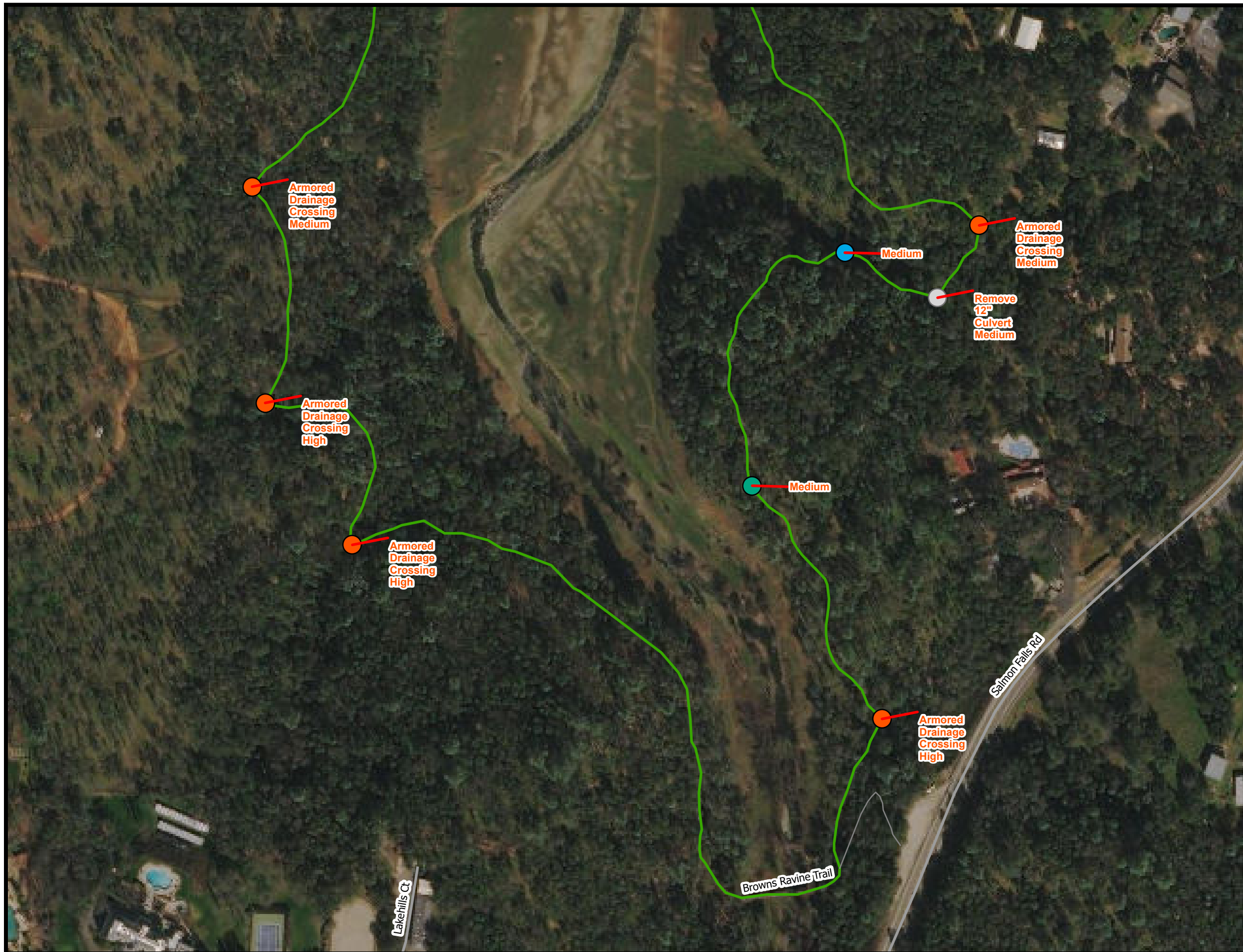
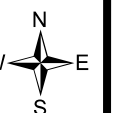
High= High priority to be completed prior to CIU.

Medium= Medium priority to be completed within a designated timeframe after CIU.



California State Parks

6/7/2021





Brown's Ravine Trail- Change -in-Use

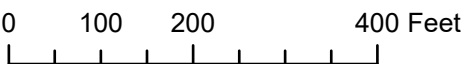
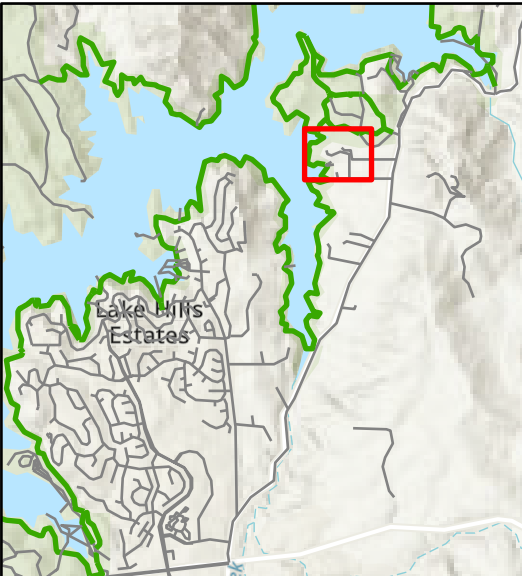
Folsom Lake SRA

Legend

- Local Road
- State Park Road
- State Park Trail
- Bridge
- Structure: Rock
- Trail Brushing: Maintenance
- Other (See Comments)
- Parking Areas

High= High priority to be completed prior to CIU.

Medium= Medium priority to be completed within a designated timeframe after CIU.



California State Parks

6/7/2021



Brown's Ravine Trail Medium

Brown's Ravine Trail-Change -in-Use

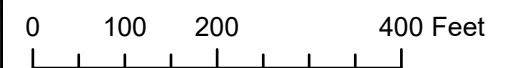
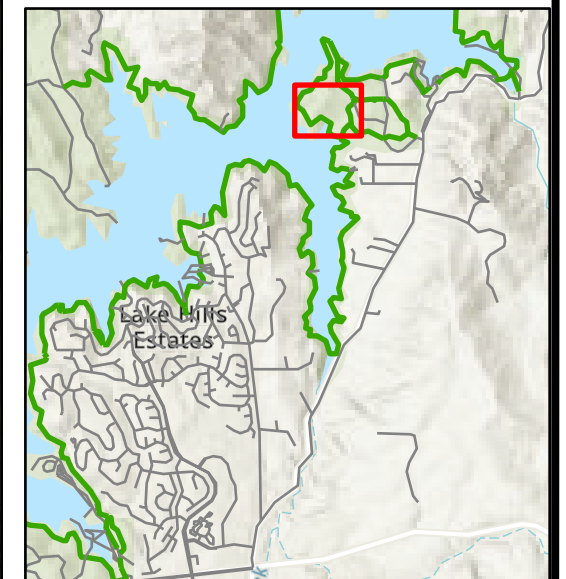
Folsom Lake SRA

Legend

- Trail Remove
- Trail Reroute
- <all other values>
- State Park Trail
- Structure: Rock
- Drain Dip
- Other (See Comments)
- Parking Areas

High= High priority to be completed prior to CIU.

Medium= Medium priority to be completed within a designated timeframe after CIU.



California State Parks

6/7/2021



Brown's Ravine Trail- Change -in-Use

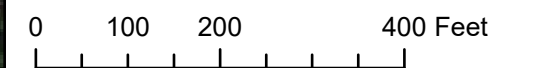
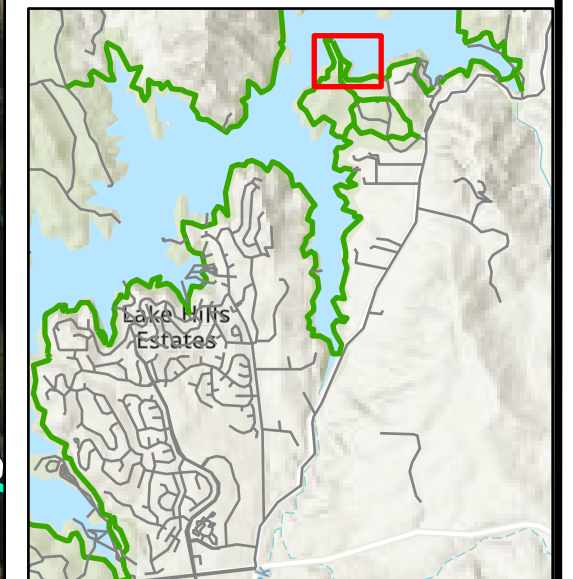
Folsom Lake SRA

Legend

- Trail Reconstruct/Reengineer
- State Park Trail
- Drain Dip
- Trail Brushing: Maintenance
- Parking Areas

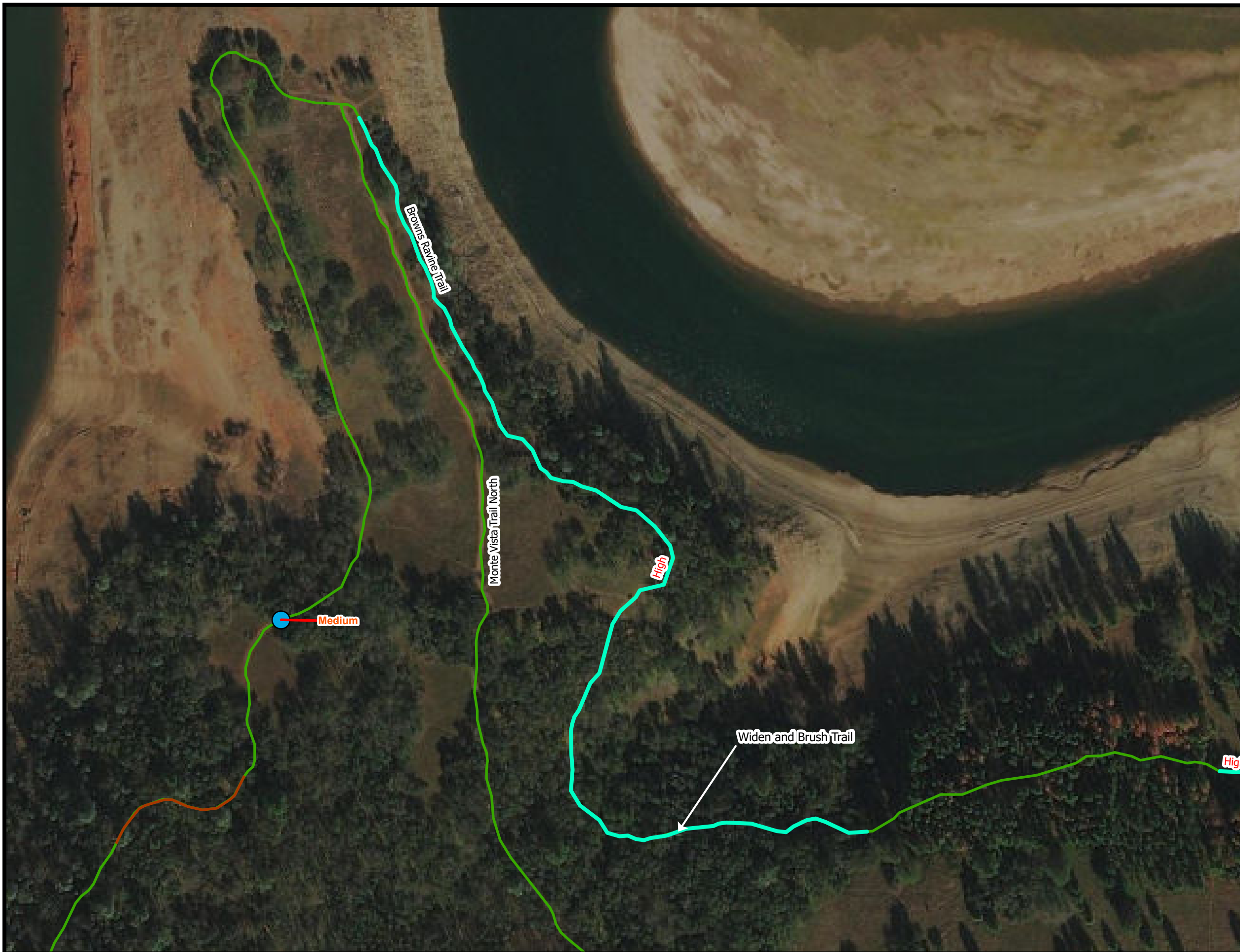
High= High priority to be completed prior to CIU.

Medium= Medium priority to be completed within a designated timeframe after CIU.



California State Parks

6/7/2021



Brown's Ravine Trail- Change -in-Use

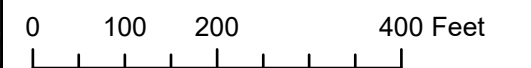
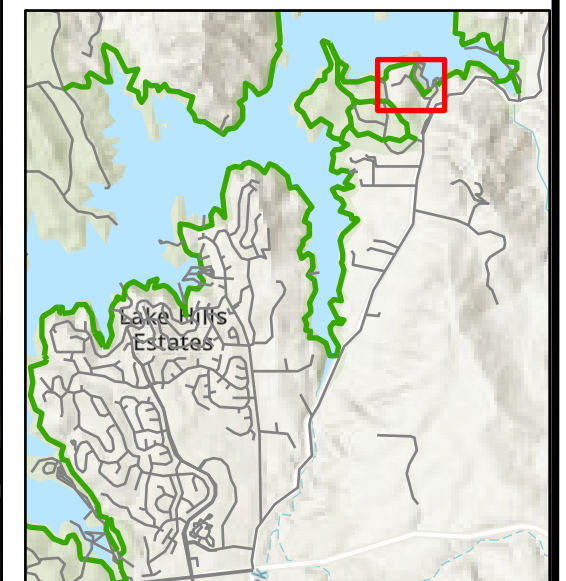
Folsom Lake SRA

Legend

- Trail Reconstruct/Reengineer
- Local Road
- State Park Road
- State Park Trail
- Parking Areas

High= High priority to be completed prior to CIU.

Medium= Medium priority to be completed within a designated timeframe after CIU.



California State Parks

6/7/2021

